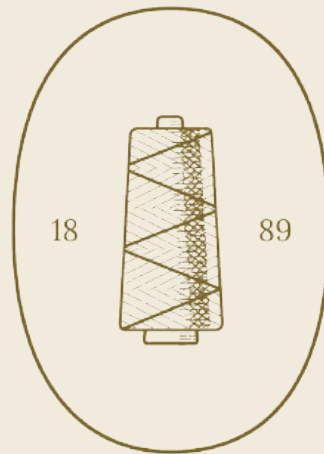


TISSAGE

Textile
wallcovering

18



89

Belgian
authenticity

MAHIEU

TISSAGE MAHIEU

Textile
wallcovering

Belgian
authenticity

About



For *five generations*, we have been dedicated to *crafted woven wallcoverings* of the highest standard, following an authentic path that *began in 1889*. Our *family business*, all this time based in The West of Flanders in Belgium, is therefore an established name within a region where the flax flowers used to blossom, where the stems lay out to dry in the sunny fields and the fibres were spun into yarn.

To this day, we are an *ambassador* in the *design, craftsmanship and distribution* of an exceptional and pure product that stands the test of time. We have all the in-house knowledge and skills, follow every step carefully and guarantee *locally driven* collaborations with our suppliers and partners.

Whether you are the *resident* of a home that you furnish thoughtfully, an *architect* with a distinct vision, or a *business* with ambitious plans, we have a solution that will surpass your expectations, and vow a *customised* and personal approach. We address the world; we are flexible and committed. But most of all, we think any room should be allowed to impress:

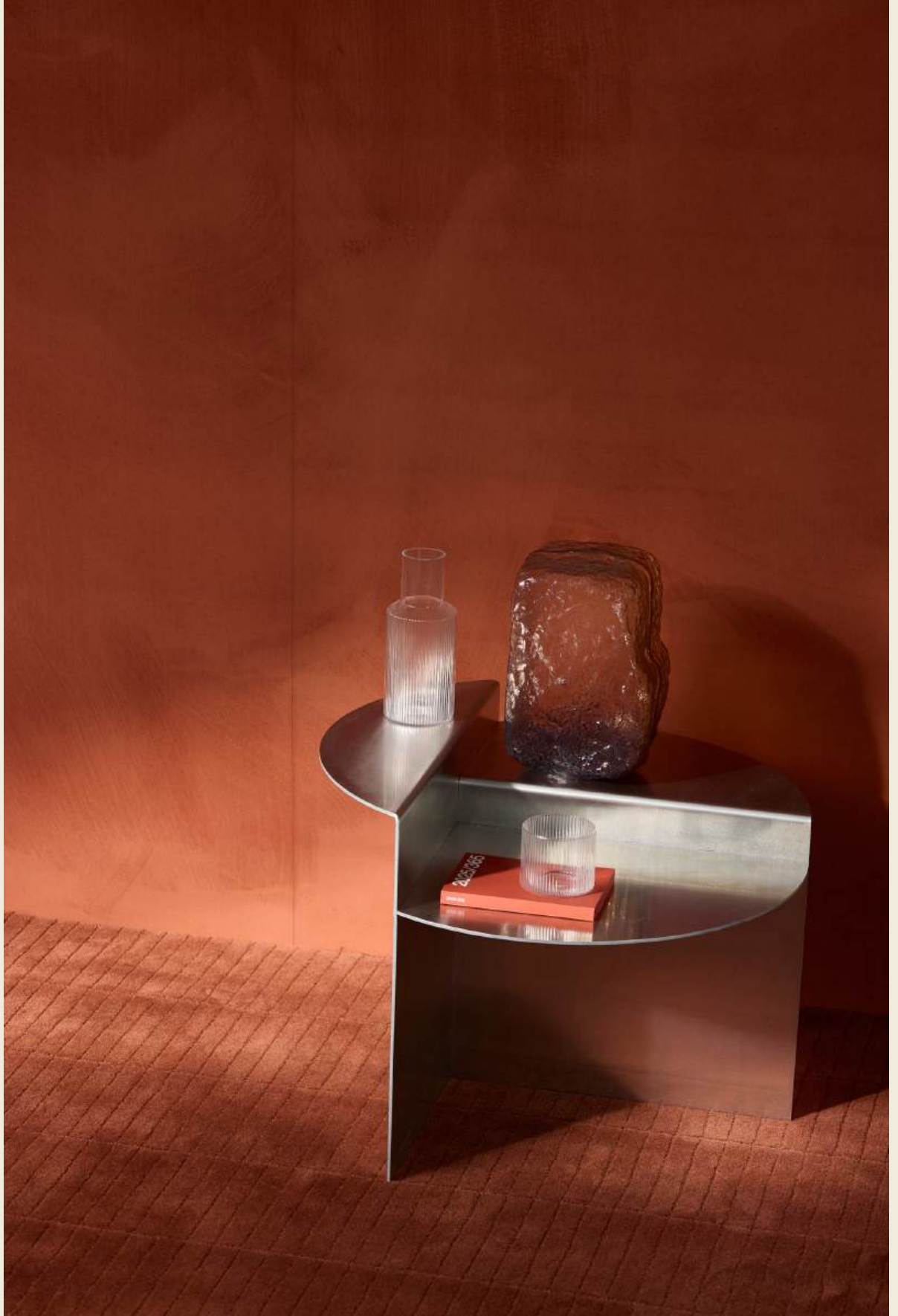
We value a space, reimagine it as a retreat that delicately envelops you, and where the eye is gently drawn to beautiful textures and colours. We want every room to be a home, regardless of how long you'll stay.

TISSAGE MAHIEU

Textile
wallcovering

Belgian
authenticity

Velveteen



Indulge in the lush allure of this bold, lively, and irresistibly soft Velveteen collection. With 16 rich, warm hues and a sumptuous texture, this collection is the essence of retro sophistication. Whether adorning the plush corners of a chic hotel, a cozy bar, or your own home, this fabric radiates elegance and nostalgia.



Technical specifications

Compositon:	100% PES
Dimensions:	Textile wallcovering on a non-woven backing
Pattern repeat:	Width 125 cm - 49,2", sold by the linear metre / yard
Adhesive:	No rapport
Maintenance:	Apply a heavy-duty, mixed PVA or EVA
	clear wallcovering adhesive
	Spongeable while hanging
	Follow our hanging instructions

TISSAGE MAHIEU

Textile
wallcovering

Belgian
authenticity

Tartan



Experience the perfect blend of nostalgia and modernity with the Tartan collection. Featuring warm, inviting colors and a contemporary design, this collection is designed to inspire and transport you to a world of comfort and style. Perfect for adding character to your interior, these tartans effortlessly marry timeless tradition with a modern twist. Available in six stunning color palettes, each piece is a celebration of heritage reimagined for today.



C2



C3



C4



C6



C7



C8

Technical specifications

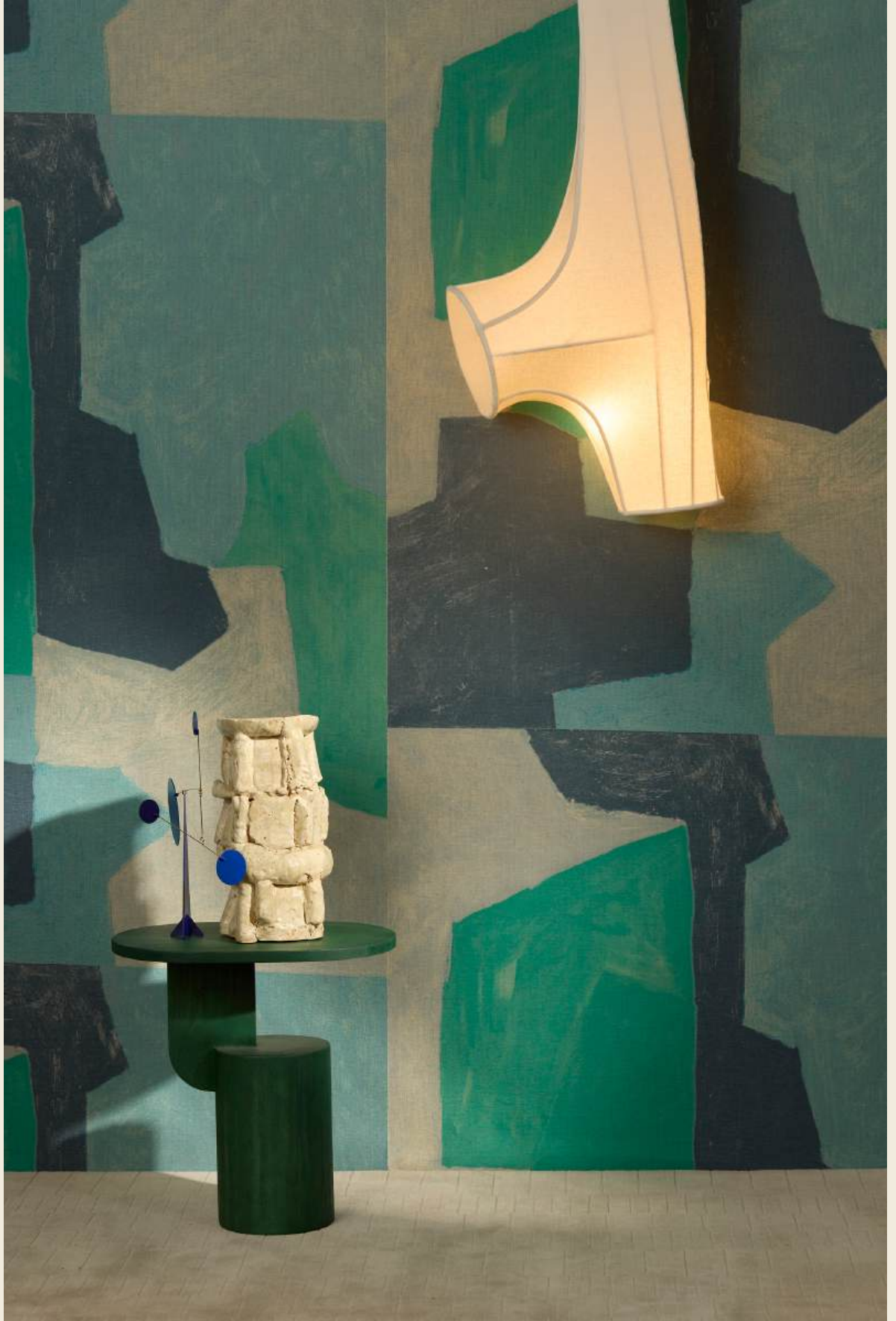
Compositon:	11% LI - 89% PES Textile wallcovering on a non-woven backing
Dimensions:	Width 125 cm - 49,2", sold by the linear metre / yard
Pattern repeat:	No rapport
Adhesive:	Apply a heavy-duty, mixed PVA or EVA clear wallcovering adhesive
Maintenance:	Spongeable while hanging Follow our hanging instructions

TISSAGE MAHIEU

Textile
wallcovering

Belgian
authenticity

Tableau



With playful colors and a sleek, contemporary design, the Tableau collection evokes the essence of an artful escape. Each piece feels like a painting come to life, transforming your interior into a vibrant yet harmonious space. Available in three carefully curated colorways, Tableau invites you to dream, create, and surround yourself with beauty.



C1



C3



C5

Technical specifications

Compositon:	11% LI - 89% PES Textile wallcovering on a non-woven backing
Dimensions:	Width 125 cm - 49,2", sold by the linear metre / yard
Pattern repeat:	No rapport
Adhesive:	Apply a heavy-duty, mixed PVA or EVA clear wallcovering adhesive
Maintenance:	Spongeable while hanging Follow our hanging instructions

TISSAGE MAHIEU

Textile
wallcovering

Belgian
authenticity

Textured Tales



Discover the timeless charm of our Textured Tales collection. Featuring a range of designs in soft neutral tones, this collection combines understated elegance with rich textures. Each piece tells a story of nostalgia and warmth, bringing depth and character to your interior. Perfect for creating a cozy yet sophisticated atmosphere, Textured Tales is where simplicity meets tactile beauty.

Bilbao



31



33



34

Ashram



30



40

Lustreloom



32



35



36



37

Technical specifications

Compositon:	Bilbao: 95% LI - 5% PES Ashram 30: 25% PES - 27% WOOL - 48% LI Ashram 40: 100% PES Lustreloom: 100% PES Textile wallcovering on a non-woven backing
Dimensions:	Bilbao: Width 130 cm - 51" Ashram, Lustreloom: Width 125 cm - 49,2", sold by the linear metre / yard
Pattern repeat:	No rapport
Adhesive:	Apply a heavy-duty, mixed PVA or EVA clear wallcovering adhesive Spongeable while hanging
Maintenance:	Follow our hanging instructions

TISSAGE MAHIEU

Textile
wallcovering

Belgian
authenticity

Palermo



With its earthy, natural tones, the Palermo collection exudes a calming and serene atmosphere. Classic and not without a nostalgic touch, it creates a timeless environment. For an interior that is thoughtful, warm, and grounded, never overwhelming. The jacquard fabric is finely woven, easy to handle and of high quality.



Bone



Rhino



Pigeon



Latte



Dark tan



Carbon

Technical specifications

Compositon:	41% ACRYL - 25% PES - 15% PP - 11% VI - 8% LI Textile wallcovering on a non-woven backing
Dimensions:	Width 120 cm - 47,2", sold by the linear metre / yard
Pattern repeat:	No rapport
Adhesive:	Apply a heavy-duty, mixed PVA or EVA clear wallcovering adhesive
Maintenance:	Spongeable while hanging Follow our hanging instructions

TISSAGE MAHIEU

Textile
wallcovering

Belgian
authenticity

Clouds



The Clouds collection lives up to its name. The design creates a cloud-like appearance, a dreamy atmosphere that is enhanced by the relief and exceptionally heavy weave. The vibrant, sparkling colours give this traditional jacquard fabric a unique, contemporary look. The fabric is also noise absorbing, making it the ideal solution for a cosy interior.



Frost



Dove



Ash



Cobalt



Hazel



Sepia



Olive



Dijon

Technical specifications

Compositon:	55% ACRYL - 45% PES Textile wallcovering on a non-woven backing
Dimensions:	Width 120 cm - 47,2", sold by the linear metre / yard
Pattern repeat:	No rapport
Adhesive:	Apply a heavy-duty, mixed PVA or EVA clear wallcovering adhesive
Maintenance:	Spongeable while hanging Follow our hanging instructions

TISSAGE MAHIEU

Textile
wallcovering

Belgian
authenticity

Duvet – Mineral



Our Duvet collection offers a soft touch, a sophisticated, thin felt fabric that also benefits acoustics and has a fire rating. The various carefully thought-out prints, with their natural temperament, can also be reconsidered and customised. Accessible and versatile, the homely Duvet meets everyone's needs.



C32 Mineral



C1 Mineral



C4 Mineral



C3 Mineral



C17 Mineral



C9 Mineral



C7 Mineral



C27 Mineral



C24 Mineral



C21 Mineral

Technical specifications

Compositon:	100% PES Textile wallcovering on a non-woven backing
Dimensions:	Width 130 cm - 51", sold by the linear metre / yard
Pattern repeat:	No rapport
Adhesive:	Apply a heavy-duty, mixed PVA or EVA clear wallcovering adhesive
Maintenance:	Spongeable while hanging Follow our hanging instructions

TISSAGE
MAHIEU

Textile
wallcovering

Belgian
authenticity

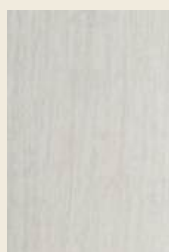
Duvet –
Dune



Our Duvet collection offers a soft touch, a sophisticated, thin felt fabric that also benefits acoustics and has a fire rating. The various carefully thought-out prints, with their natural temperament, can also be reconsidered and customised. Accessible and versatile, the homely Duvet meets everyone's needs.



C47 Dune



C54 Dune



C48 Dune



C4 Dune



C19 Dune



C12 Dune



C56 Dune



C33 Dune



C11 Dune



C7 Dune



C1 Dune



C29 Dune



C38 Dune



C55 Dune



C5 Dune

Technical specifications

Compositon:	100% PES Textile wallcovering on a non-woven backing
Dimensions:	Width 130 cm - 51", sold by the linear metre / yard
Pattern repeat:	No rapport
Adhesive:	Apply a heavy-duty, mixed PVA or EVA clear wallcovering adhesive
Maintenance:	Spongeable while hanging Follow our hanging instructions

TISSAGE
MAHIEU

Textile
wallcovering

Belgian
authenticity

Duvet –
Capri



Our Duvet collection offers a soft touch, a sophisticated, thin felt fabric that also benefits acoustics and has a fire rating. The various carefully thought-out prints, with their natural temperament, can also be reconsidered and customised. Accessible and versatile, the homely Duvet meets everyone's needs.



C20 Capri



C8 Capri



C7 Capri



C3 Capri



C4 Capri



C16 Capri



C23 Capri



C34 Capri

Technical specifications

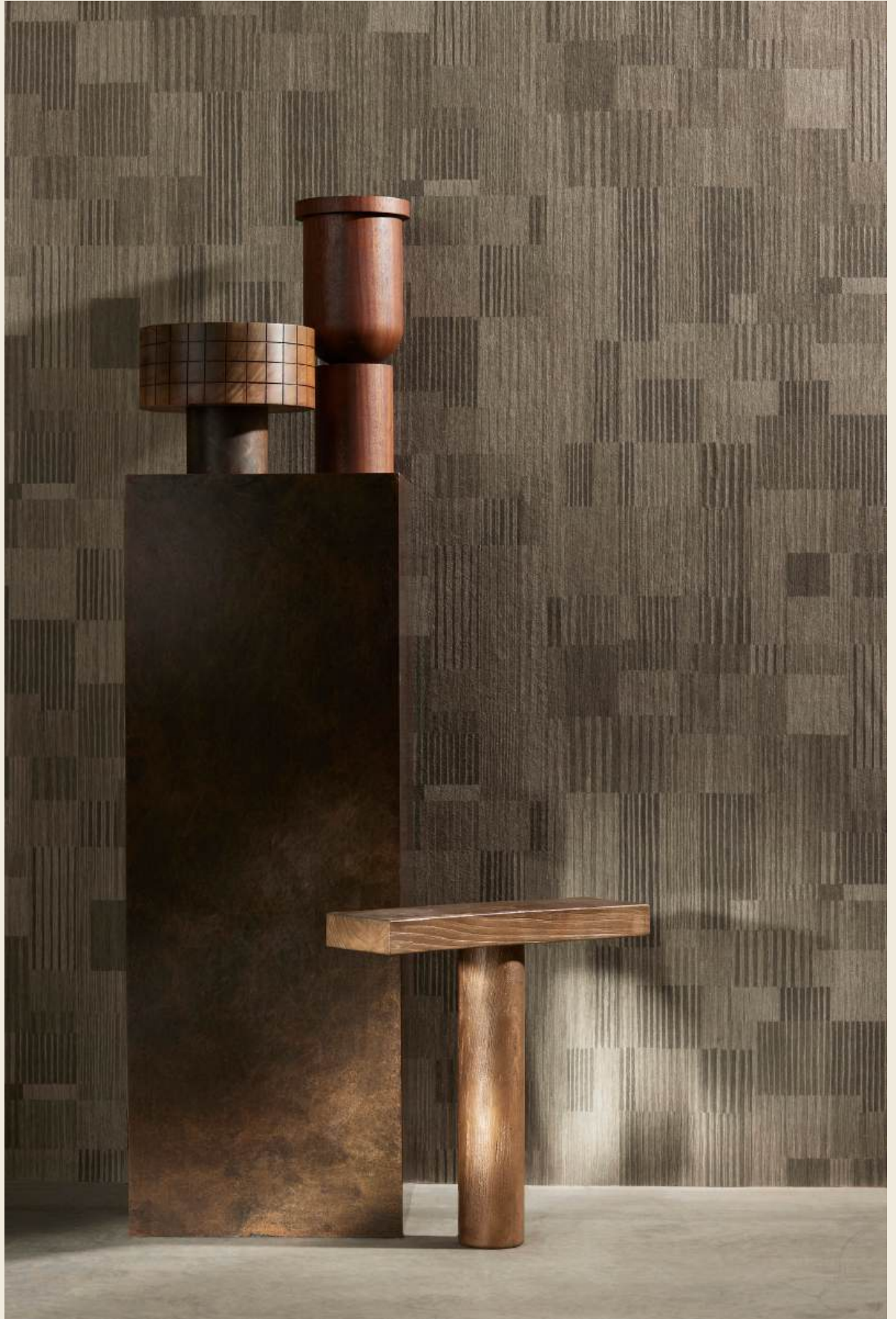
Compositon:	100% PES Textile wallcovering on a non-woven backing
Dimensions:	Width 130 cm - 51", sold by the linear metre / yard
Pattern repeat:	No rapport
Adhesive:	Apply a heavy-duty, mixed PVA or EVA clear wallcovering adhesive
Maintenance:	Spongeable while hanging Follow our hanging instructions

TISSAGE
MAHIEU

Textile
wallcovering

Belgian
authenticity

Duvet –
Alfresco



Our Duvet collection offers a soft touch, a sophisticated, thin felt fabric that also benefits acoustics and has a fire rating. The various carefully thought-out prints, with their natural temperament, can also be reconsidered and customised. Accessible and versatile, the homely Duvet meets everyone's needs.



C7 Alfresco



C3 Alfresco



C1 Alfresco



C2 Alfresco

Technical specifications

Compositon:	100% PES
Dimensions:	Textile wallcovering on a non-woven backing
Pattern repeat:	Width 130 cm - 51", sold by the linear metre / yard
Adhesive:	No rapport
Maintenance:	Apply a heavy-duty, mixed PVA or EVA clear wallcovering adhesive
	Spongeable while hanging
	Follow our hanging instructions

TISSAGE MAHIEU

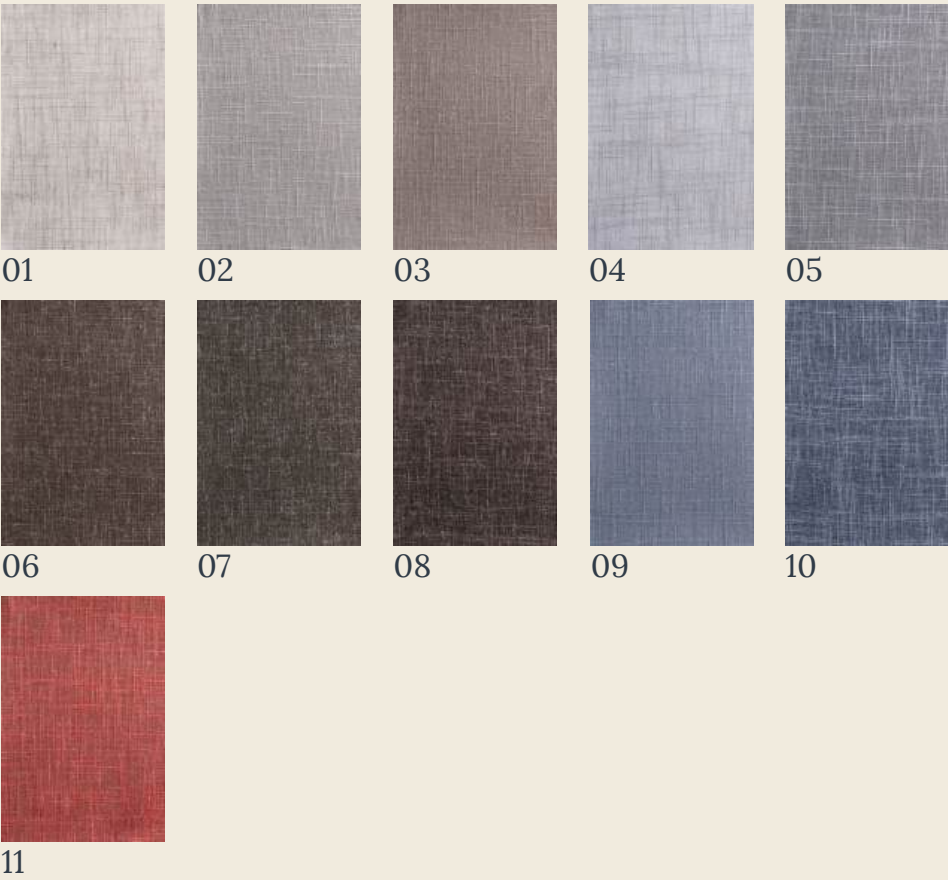
Textile
wallcovering

Belgian
authenticity

Phuket



Phuket's artisanal hemp appearance creates a nostalgic mood of artistry and timeless craftsmanship. The tone it sets is one of warmth and homeliness, giving a sense of belonging and intimacy. This textile wallcovering can thus find a place in any interior and will invariably complement it with its gentle, classic glow. As with all our new collections, we opt to weave with no rapport, allowing for seamless surfaces.



Technical specifications

Compositon:	80% PES - 20% LI Textile wallcovering on a non-woven backing
Dimensions:	Width 110 cm - 43", sold by the linear metre / yard
Pattern repeat:	No rapport
Adhesive:	Apply a heavy-duty, mixed PVA or EVA clear wallcovering adhesive
Maintenance:	Spongeable while hanging Follow our hanging instructions

TISSAGE MAHIEU

Textile
wallcovering

Belgian
authenticity

Falls



With its open weave, Falls reminds us of the flowing splendour of a waterfall. Playful and inspired by unspoilt nature, it allows a space to be infused with a dazzling spectacle, though concluding with a striking calmness. Just like that earlier-mentioned waterfall, where you watch in amazement as the water dances, but above all, tempt you to an aura of singular serenity. This new collection is likewise woven with no rapport, allowing the bands used to achieve the surface to flow seamlessly into each other.



220.01



220.02



220.08



220.03



220.04



220.05



220.06



220.07



220.09

Technical specifications

Compositon:	80% PES - 20% LI Textile wallcovering on a non-woven backing
Dimensions:	Width 110 cm - 43", sold by the linear metre / yard
Pattern repeat:	No rapport
Adhesive:	Apply a heavy-duty, mixed PVA or EVA clear wallcovering adhesive
Maintenance:	Spongeable while hanging Follow our hanging instructions

TISSAGE MAHIEU

Textile
wallcovering

Belgian
authenticity

Sculpture



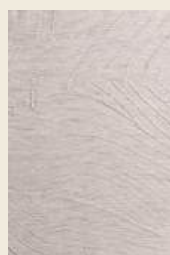
As an actualised sequel to our earlier Cubro collection, we again found our inspiration in nature while designing Sculpture. The leaf-shaped structures draw a lustrous foliage pattern on the wall and are a true eye-catcher for any interior. We chose a wide range of warm, contemporary colours that in turn confirm and enhance the natural feel. By working without rapport, this collection further allows you to achieve a seamless mural.



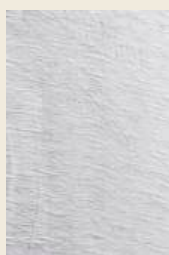
Snow



Pearl



Albaster



Argent



Oyster



Basalt



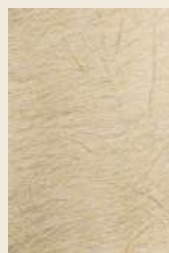
Sand



Stone



Marine



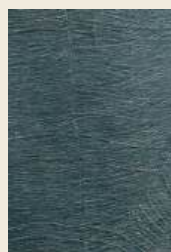
Citrine



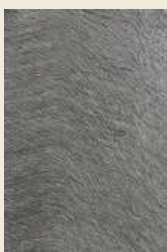
Pistache



Jade



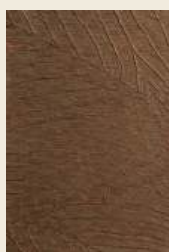
Forrest



Sage



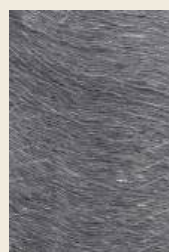
Azur



Terra



Cedar



Charcoal

Technical specifications

Compositon:	95% LI - 5% PES Textile wallcovering on a non-woven backing
Dimensions:	Width 110 cm - 43", sold by the linear metre / yard
Pattern repeat:	No rapport
Adhesive:	Apply a heavy-duty, mixed PVA or EVA clear wallcovering adhesive
Maintenance:	Spongeable while hanging Follow our hanging instructions

TISSAGE MAHIEU

Textile
wallcovering

Belgian
authenticity

Hermitage



Hermitage is pure linen which has been masterfully and vertically pleated, providing a space with an evocative three-dimensional effect. It accentuates the ambient light in an alluring fashion, adding tactile textures to an otherwise even surface. Not surprisingly, this wallcovering – one of our valued classics – allows for a luxurious and generous mood but is as homely as it is exquisite. For its colours, you can choose from a range of eighteen variations, which speak softly or distinctly, suited both to an entire room and to adding a surprising accent.



Liverpool



Dover



Brighton



London



Perth



Cheltenham



Edinburgh



Dundee



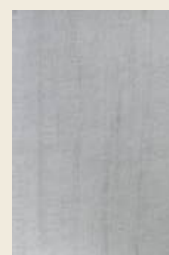
Bristol



Cambridge



Oxford



NewCastle



Aberdeen



Glasgow



Leeds



Windsor



Norwich



Cardiff

Technical specifications

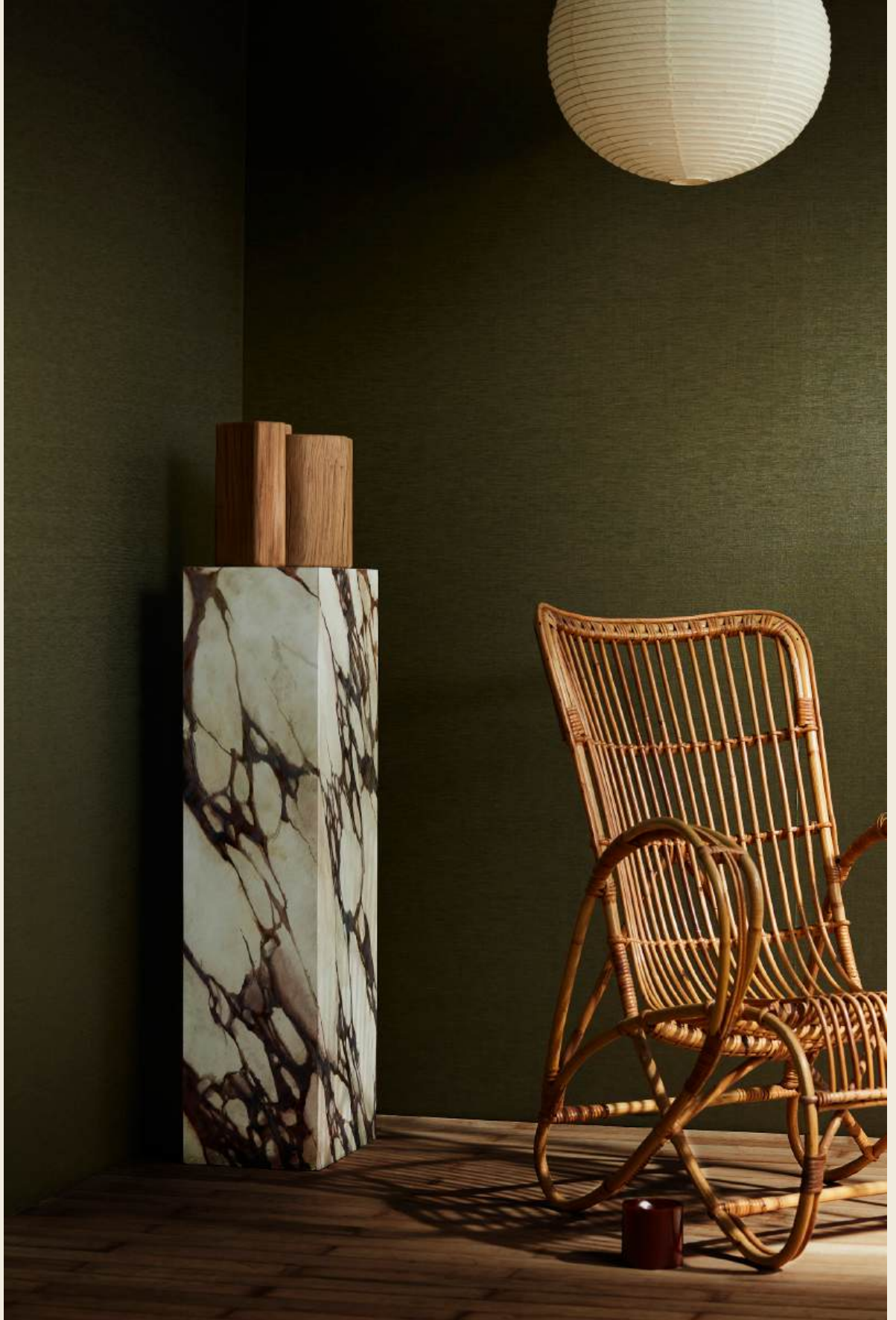
Compositon:	97% LI - 3% PES Textile wallcovering on a non-woven backing
Dimensions:	Width 110 cm - 43", sold by the linear metre / yard
Pattern repeat:	No rapport
Adhesive:	Apply a heavy-duty, mixed PVA or EVA clear wallcovering adhesive
Maintenance:	Spongeable while hanging Follow our hanging instructions

TISSAGE MAHIEU

Textile
wallcovering

Belgian
authenticity

Edra – Portofino



Our Edra collection spans two categories but focuses in its entirety on what linen is capable of. It endorses the raw flax fibre's refined qualities and aligns with a way of life where both subtlety and sophistication are key. For Portofino, this is captured with a mood that brings out the linen's natural lustre.



Technical specifications

Compositon:	97% LI - 3% PES Textile wallcovering on a non-woven backing
Dimensions:	Width 110 cm - 43", sold by the linear metre / yard
Pattern repeat:	No rapport
Adhesive:	Apply a heavy-duty, mixed PVA or EVA clear wallcovering adhesive
Maintenance:	Spongeable while hanging Follow our hanging instructions

Edra –
Portofino

COLLECTION

TISSAGE MAHIEU

Textile
wallcovering

Belgian
authenticity

Edra – Santorini



Our Edra collection spans two categories but focuses in its entirety on what linen is capable of. It endorses the raw flax fibre's refined qualities and aligns with a way of life where both subtlety and sophistication are key. For Portofino, this is captured with a mood that brings out the linen's natural lustre, while Santorini dazzles with the visual aspects of traditional weaving techniques. The shimmer is invariably subtle and sophisticated, guaranteeing a timeless look provided with a modern twist.



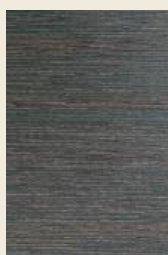
1320



1310



1350



1360



1340



1330

Technical specifications

Compositon:	100% PES Textile wallcovering on a non-woven backing
Dimensions:	Width 110 cm - 43", sold by the linear metre / yard
Pattern repeat:	No rapport
Adhesive:	Apply a heavy-duty, mixed PVA or EVA clear wallcovering adhesive
Maintenance:	Spongeable while hanging Follow our hanging instructions

TISSAGE
MAHIEU

Textile
wallcovering

Belgian
authenticity

Four Seasons – Suede



The Four Seasons collection comes in a wide range of as many as 23 exceptional colours. The collection is divided into three categories, with each variation playing off its textures differently depending on the pleat, its thickness or its purpose.

For example, our Suede wallcovering can adapt to the nature of any space, whether classic or contemporary. Its soft and warm look is ideal for creating a homely aesthetic with generous ease.



Technical specifications

Compositon:	100% PES Textile wallcovering on a non-woven backing
Dimensions:	Width 130 cm - 51", sold by the linear metre / yard
Pattern repeat:	No rapport
Adhesive:	Apply a heavy-duty, mixed PVA or EVA clear wallcovering adhesive
Maintenance:	Spongeable while hanging Follow our hanging instructions

Four Seasons – Suede

TISSAGE
MAHIEU

Textile
wallcovering

Belgian
authenticity

Four Seasons – Santos



The Four Seasons collection comes in a wide range of as many as 23 exceptional colours. The collection is divided into three categories, with each variation playing off its textures differently depending on the pleat, its thickness or its purpose.

For example, our Suede wallcovering can adapt to the nature of any space, whether classic or contemporary. Its soft and warm look is ideal for creating a homely aesthetic with generous ease.

While Santos, with its refined pleats, provides more vibrancy, installing a mood that embraces life in all its richness.



751



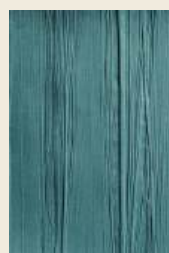
775



741



745



718



755



740



760



705



704



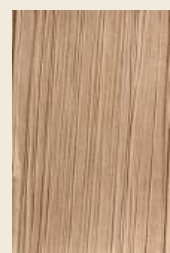
717



754



752



731



715



706



707



774



766



732

Technical specifications

Compositon:	100% PES Textile wallcovering on a non-woven backing
Dimensions:	Width 110 cm - 43", sold by the linear metre / yard
Pattern repeat:	No rapport
Adhesive:	Apply a heavy-duty, mixed PVA or EVA clear wallcovering adhesive
Maintenance:	Spongeable while hanging Follow our hanging instructions

Four Seasons – Santos

TISSAGE
MAHIEU

Textile
wallcovering

Belgian
authenticity

Nuance –
Cubro



Our love for nature and its splendour is enchantingly expressed in our design for Cubro. To this end, chenille and linen yarns are pressed like leaves and mounted on a fleece base in natural colours. What results is the impression of a foliage and its delicately veined motifs. As such, it stands out by providing an interior with the soulful, gentle charm of a natural setting, is subtle yet expressive, and a treat for the eye.



210



211



212



213



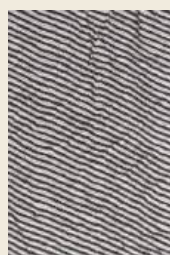
214



215



216



217

Technical specifications

Compositon:	60% ACRYL - 37% LI - 3% PES Textile wallcovering on a non-woven backing
Dimensions:	Width 110 cm - 43", sold by the linear metre / yard
Pattern repeat:	No rapport
Adhesive:	Apply a heavy-duty, mixed PVA or EVA clear wallcovering adhesive
Maintenance:	Spongeable while hanging Follow our hanging instructions

Nuance –
Cubro

TISSAGE MAHIEU

Textile
wallcovering

Belgian
authenticity

Triad



For anyone looking to decorate their interior with a sense of grandeur and extravagance, we present our Triad collection. Crafted through unique weaving techniques, we have managed to provide this colourful and vivid wallcovering with a vibrant three-dimensional impression that manifests itself generously.



30321



30331



30325



30401



30375



30376



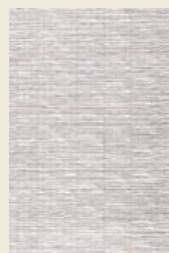
30397



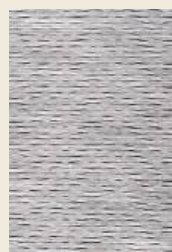
30311



30333



30341



30347



30316

Technical specifications

Compositon:	47% PES - 33% VI - 20% LI Textile wallcovering on a non-woven backing
Dimensions:	Width 110 cm - 43", sold by the linear metre / yard
Pattern repeat:	No rapport
Adhesive:	Apply a heavy-duty, mixed PVA or EVA clear wallcovering adhesive
Maintenance:	Spongeable while hanging Follow our hanging instructions

TISSAGE
MAHIEU

Textile
wallcovering

Belgian
authenticity

Granat –
Salerno



The collections in the Granat series share the ease with which they can be mounted. Due to the non-woven backing, they can be applied without difficulty. Visually, however, there are differences. Isiolo, for instance, is all about a patterned yet coherent mood that radiates contemporary luxury. We provide it in a wide range of colours, where you can choose both soft tints and bold tones. If you prefer something slightly more classic, you can in turn choose Salerno, which expresses timelessness with its lovely linen look, and allows you to combine different colours.



2013



2012



2022



2026



2059



2054



2051



2042



2041



2019



2043



2027



2017



2016

Technical specifications

Compositon:	60% PES - 24% CO - 10% ACRYL - 6% LI Textile wallcovering on a non-woven backing
Dimensions:	Width 120 cm - 47,2", sold by the linear metre / yard
Pattern repeat:	No rapport
Adhesive:	Apply a heavy-duty, mixed PVA or EVA clear wallcovering adhesive
Maintenance:	Spongeable while hanging Follow our hanging instructions

Granat –
Salerno

COLLECTION

TISSAGE MAHIEU

Textile
wallcovering

Belgian
authenticity

Granat – Isiolo



The collections in the Granat series share the ease with which they can be mounted. Due to the non-woven backing, they can be applied without difficulty. Visually, however, there are differences. Isiolo, for instance, is all about a patterned yet coherent mood that radiates contemporary luxury. We provide it in a wide range of colours, where you can choose both soft tints and bold tones.



5017



5016



5021



5029



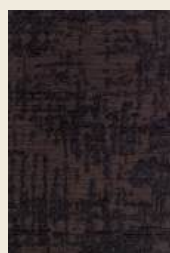
5019



5027



5030



5025



5031



5010

Technical specifications

Composito	44% PES - 18% CO - 38% ACRYL Textile wallcovering on a non-woven backing
Dimensions:	Width 120 cm - 47,2", sold by the linear metre / yard
Pattern repeat:	No rapport
Adhesive:	Apply a heavy-duty, mixed PVA or EVA clear wallcovering adhesive
Maintenance:	Spongeable while hanging Follow our hanging instructions

Granat –
Isiolo

TISSAGE MAHIEU

Textile
wallcovering

Belgian
authenticity

Intrigue – Griffin



The Griffin wallcovering explores the silky sheen of carefully woven yarn in all its splendour. As part of the luxurious Intrigue collection, the natural look of linen is therefore central, with a pronounced focus on its delicate textures. The sheen also makes the colours stand out exceptionally, enriching an interior with their subtle pigments.



Technical specifications

Compositon:	97% LI - 3% PES Textile wallcovering on a non-woven backing
Dimensions:	Width 110 cm - 43", sold by the linear metre / yard
Pattern repeat:	No rapport
Adhesive:	Apply a heavy-duty, mixed PVA or EVA clear wallcovering adhesive
Maintenance:	Spongeable while hanging Follow our hanging instructions

Intrigue –
Griffin

TISSAGE MAHIEU

Textile
wallcovering

Belgian
authenticity

Bruges – Convent



For our Bruges collection, we put absolute sophistication and delicacy first. Just as the historic city offers a lustrous interweaving of streets and canals, this line is typified by its complex yet delicate pattern and structure. The Convent line is made from carefully milled linen fibres that lend lustre to the materiality in a way that is different from weaving, with a glossy look and airy essence illuminating any interior.



301



302



303



304



305



306



307



308

Technical specifications

Compositon:	65% LI - 35% PES Textile wallcovering on a non-woven backing
Dimensions:	Width 110 cm - 43", sold by the linear metre / yard
Pattern repeat:	No rapport
Adhesive:	Apply a heavy-duty, mixed PVA or EVA clear wallcovering adhesive
Maintenance:	Spongeable while hanging Follow our hanging instructions

Bruges –
Convent

TISSAGE MAHIEU

Textile
wallcovering

Belgian
authenticity

Elite



The Elite collection boasts a new style of colouring using natural linen yarns together with a pleasant touch of shine to attain the new trend for colour and excentricity combined with a longing for natural fibres. This collection takes us away from the traditional linen country look to an atmosphere only available to the happy few, thus making us all Elite. The advance technique of a three thread weftweaving contrasting with a coloured non-woven backing gives the collection it's unique three dimensional look; the pattern actually floats back at us into the room, making it an inseparable part of the interior.



721



172



175



174



694



015



013



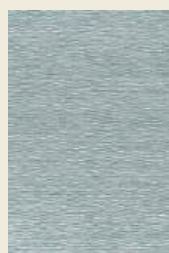
243



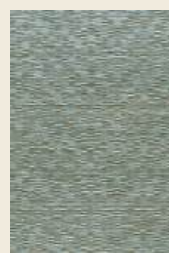
3135



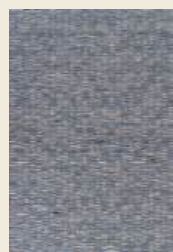
995



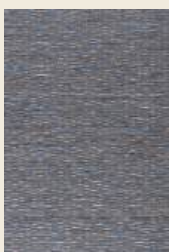
315



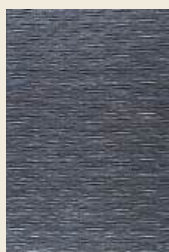
319



665



663



6647



147



345

Technical specifications

Compositon:	95% LI - 5% PES Textile wallcovering on a non-woven backing
Dimensions:	Width 110 cm - 43", sold by the linear metre / yard
Pattern repeat:	No rapport
Adhesive:	Apply a heavy-duty, mixed PVA or EVA clear wallcovering adhesive
Maintenance:	Spongeable while hanging Follow our hanging instructions

TISSAGE MAHIEU

Textile
wallcovering

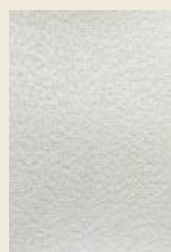
Belgian
authenticity

Cosmos – Bliss

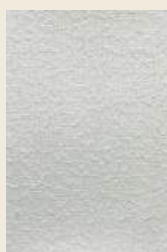


The Cosmos collection adapts to any interior. Fusion is characterized by a surprising play of earthy colors. This, combined with the innovative nature of the bouclette fabric, gives a crushed stone effect and results in a contemporary but timeless design.

Bliss adds an extra dimension to your living space, thanks to its subtle safari print covered in warm tone colors.



712151



712123



712104



712143



712125



712113



712107



712124

Technical specifications

Compositon:	100% PES Textile wallcovering on a non-woven backing
Dimensions:	Width 130 cm - 51", sold by the linear metre / yard
Pattern repeat:	No rapport
Adhesive:	Apply a heavy-duty, mixed PVA or EVA clear wallcovering adhesive
Maintenance:	Spongeable while hanging Follow our hanging instructions

Cosmos- Bliss

COLLECTION

TISSAGE MAHIEU

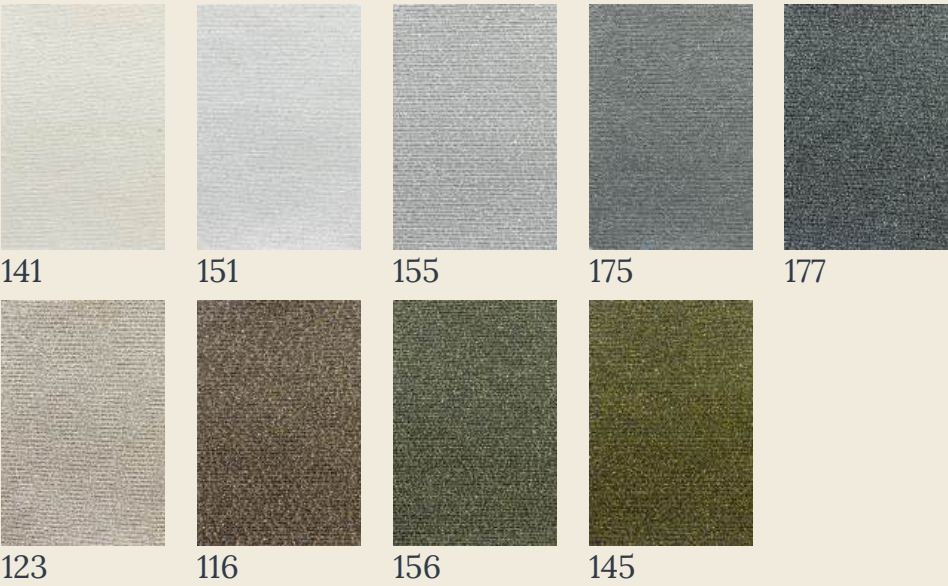
Textile
wallcovering

Belgian
authenticity

Cosmos – Fusion

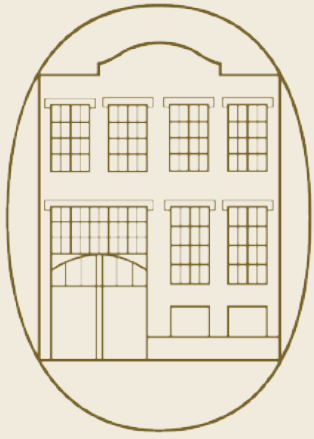


The Cosmos collection adapts to any interior. Fusion is characterized by a surprising play of earthy colors. This, combined with the innovative nature of the bouclette fabric, gives a crushed stone effect and results in a contemporary but timeless design.



Technical specifications

Compositon:	100% PES Textile wallcovering on a non-woven backing
Dimensions:	Width 110 cm - 43", sold by the linear metre / yard
Pattern repeat:	No rapport
Adhesive:	Apply a heavy-duty, mixed PVA or EVA clear wallcovering adhesive
Maintenance:	Spongeable while hanging Follow our hanging instructions



Contact

We're happy to answer any question you have.
Just send us a message on
info@tissagemahieu.com

